

clever



72 Alma Road

Central Park, Plymouth, PL3 4HD

£125,000



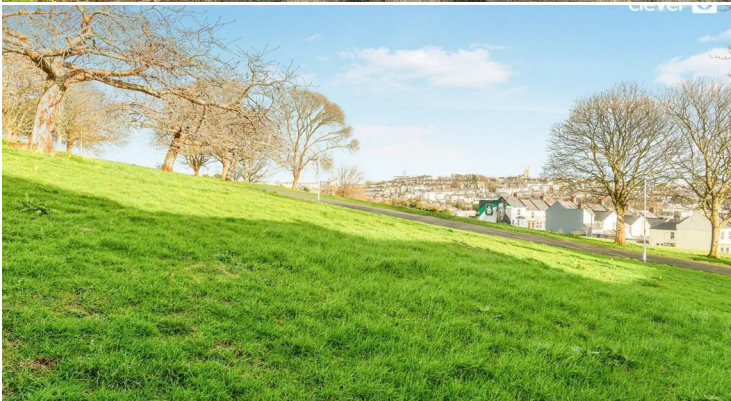
Superb Garden Flat on Alma Road located in the vibrant city of Plymouth, this charming garden flat offers a delightful blend of comfort and convenience. Spanning an impressive 603 square feet, the apartment features a well-appointed reception room that provides a welcoming space for relaxation and entertainment. The single bedroom is thoughtfully designed, ensuring a peaceful retreat at the end of the day, while the bathroom is modern and functional.

One of the standout features of this property is its picturesque view overlooking Central Park, allowing residents to enjoy the beauty of nature right from their home. The flat also boasts a private rear garden, perfect for those who appreciate outdoor space for gardening or simply unwinding in the fresh air.

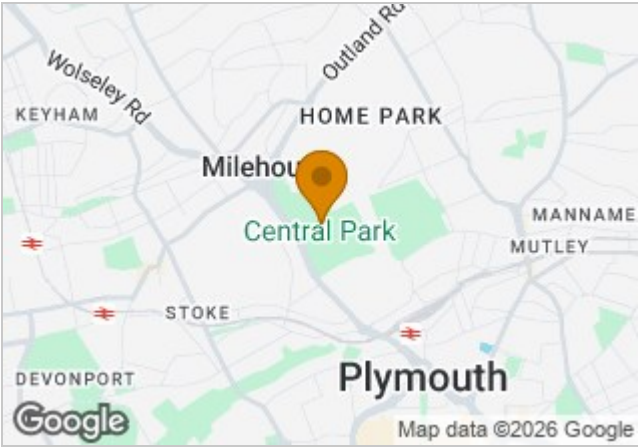
For those who require parking, the property includes off-road parking for one vehicle, a valuable asset in this bustling area. Additionally, the city centre is just a short walk away, providing easy access to a variety of shops, restaurants, and local amenities.

This apartment is an ideal choice for individuals or couples seeking a comfortable living space in a prime location. With its blend of modern living and proximity to the heart of Plymouth, this property is not to be missed.

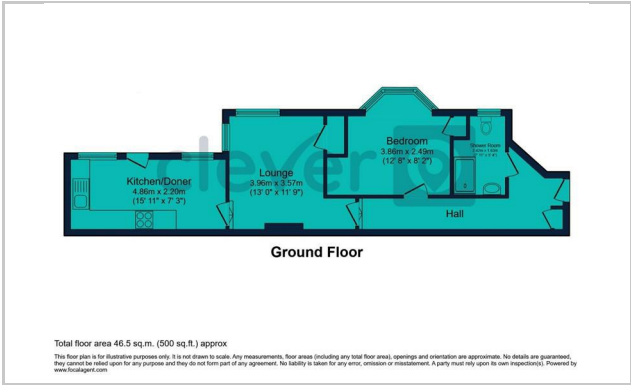




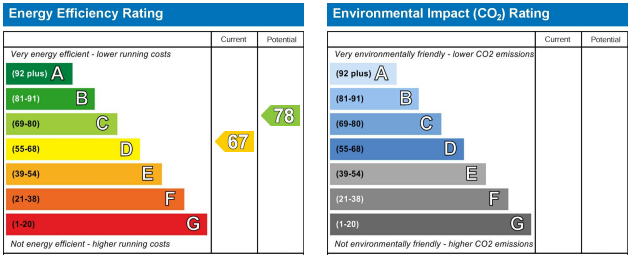
Area Map



Floor Plans



Energy Efficiency Graph



These particulars, whilst believed to be accurate are set out as a general outline only for guidance and do not constitute any part of an offer or contract. Intending purchasers should not rely on them as statements of representation of fact, but must satisfy themselves by inspection or otherwise as to their accuracy. No person in this firms employment has the authority to make or give any representation or warranty in respect of the property.